



INFORMATION RELEASE

Office of the Director

ARKANSAS STATE HIGHWAY AND
P. O. Box 2261 – Little Rock, Arkansas
Telephone (501) 569-2227

TRANSPORTATION DEPARTMENT
ArkansasHighways.com
Twitter: @AHTD

Contact:
Danny Straessle/Krista Sides

NR 16-004
January 7, 2016

Big Piney Rest Area to Close – Will Become Arkansas Tourist Information Center

POPE & JOHNSON COUNTIES (1-7) –The Big Piney Rest Area, located between the cities of Knoxville and London on Interstate 40, will undergo a complete transformation into an Arkansas Tourist Information Center; the work will require closure of the rest area for more than a year, according to the Arkansas State Highway and Transportation (AHTD) officials.

Both eastbound and westbound facilities are scheduled to be closed at **7:00 a.m. on Friday, January 8, 2016** and will remain closed for the duration of the project. Weather permitting; the Arkansas Tourist Information Center at Big Piney will open mid-2017. Motorists should plan to use alternate facilities until the project is completed.

Transformation of the Big Piney Rest Area will include demolition of the existing restrooms and construction of larger buildings to accommodate a greater number of restroom facilities that meet the latest Americans with Disabilities Act requirements, are more family friendly, and feature baby changing stations.

Unlike the Department's Welcome Centers, the new Tourist Information Centers will be unmanned, equipped instead with self-service kiosks that feature the AHTD's highly successful travel and construction information site, IDriveArkansas.com. Additional kiosks will provide weather conditions and forecasts as well as information about local amenities to include attractions, dining, lodging, and more. Limited public Wi-Fi access will also make its debut at the new facility.

-More-

Transformation of the Big Piney facility is the first among several Rest Areas that will become Tourist Information Centers. See attached drawings of a typical facility. Later this spring, the White River and Social Hill Rest Areas are scheduled to undergo the same conversion. Additionally, the Arkansas Welcome Centers in Harrison and at the Red River (U.S. Highway 71 in Little River County) will be replaced with new facilities.

The Big Piney Rest Area was originally constructed in 1991. Crow Paving of Morrilton was awarded the contract in December 2015 for transforming it into an Arkansas Tourist Information Center with a bid of \$3.6 million.

The location of all rest areas and Arkansas Welcome Centers, as well as the latest travel information, can be found on IDriveArkansas.com. You can also follow us on [@AHTD](https://twitter.com/AHTD).

- 30 -





— ARKANSAS STATE HIGHWAY AND TRANSPORTATION —





ARKANSAS STATE HIGHWAY AND TRANSPORTATION

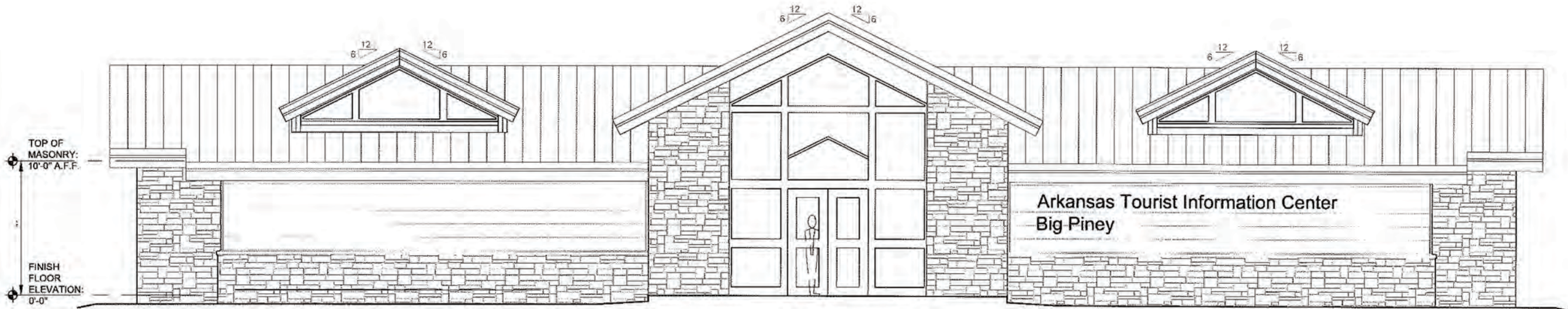


GENERAL NOTES

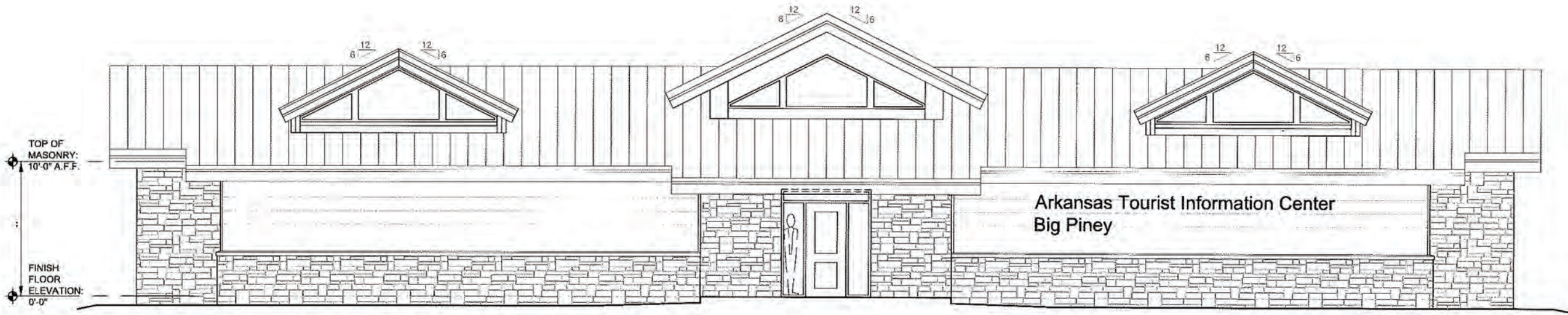
1. GENERAL NOTES

KEYED NOTES

① KEYED NOTES



① **FRONT ELEVATION**
A-201 SCALE: 1/4" = 1'-0"

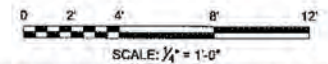


② **BACK ELEVATION**
A-201 SCALE: 1/4" = 1'-0"

Symbol	Description	Date	Appr.

Designed by: J. RAMSEY	Reviewed by: G. ARCHER	Contract Date	Task Order Number
Drawn by: J. DEJANNE	File Name: A-201.DWG	Submitted by: J. RAMSEY	Job Piece Number
Director: J. RAMSEY	Project Number: 5012015	Scale: 1:1	

ARKANSAS HIGHWAY AND TRANSPORTATION DEPARTMENT
 ARKANSAS TOURIST INFORMATION CENTER
 BIG PINEY
 ARCHITECTURAL
 RESTROOM BUILDING
 ELEVATIONS



Sheet Reference Number:
A-201
 Sheet — of #

TOP OF
MASONRY:
10'-0" A.F.F.

FINISH
FLOOR
ELEVATION:
0'-0"

1
A-202 END ELEVATION
SCALE: 1/4" = 1'-0"

TOP OF
MASONRY:
10'-0" A.F.F.

FINISH
FLOOR
ELEVATION:
0'-0"

2
A-202 END ELEVATION
SCALE: 1/4" = 1'-0"

GENERAL NOTES

1. GENERAL NOTES

KEYED NOTES

1 KEYED NOTES

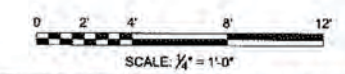


Symbol	Description	Date	Appr.

Designed by: J. RAMSEY	Submitted by: John T. Watson, II, P.E., SE Director, Federal Services	Contract Date
Drawn by: J. DEBONNE	File Name: 6/16/07	Submittal Number
Checked by: G. ARCHER	Draw Code: AHTD-SH	Task Order Number
File Name: A-202.DWG	Job Piece Number	

ARKANSAS HIGHWAY AND TRANSPORTATION DEPARTMENT
ARKANSAS TOURIST INFORMATION CENTER
BIG PINEY
ARCHITECTURAL
RESTROOM BUILDING BUILDING ELEVATIONS

Sheet Reference Number:
A-202
Sheet — of ##

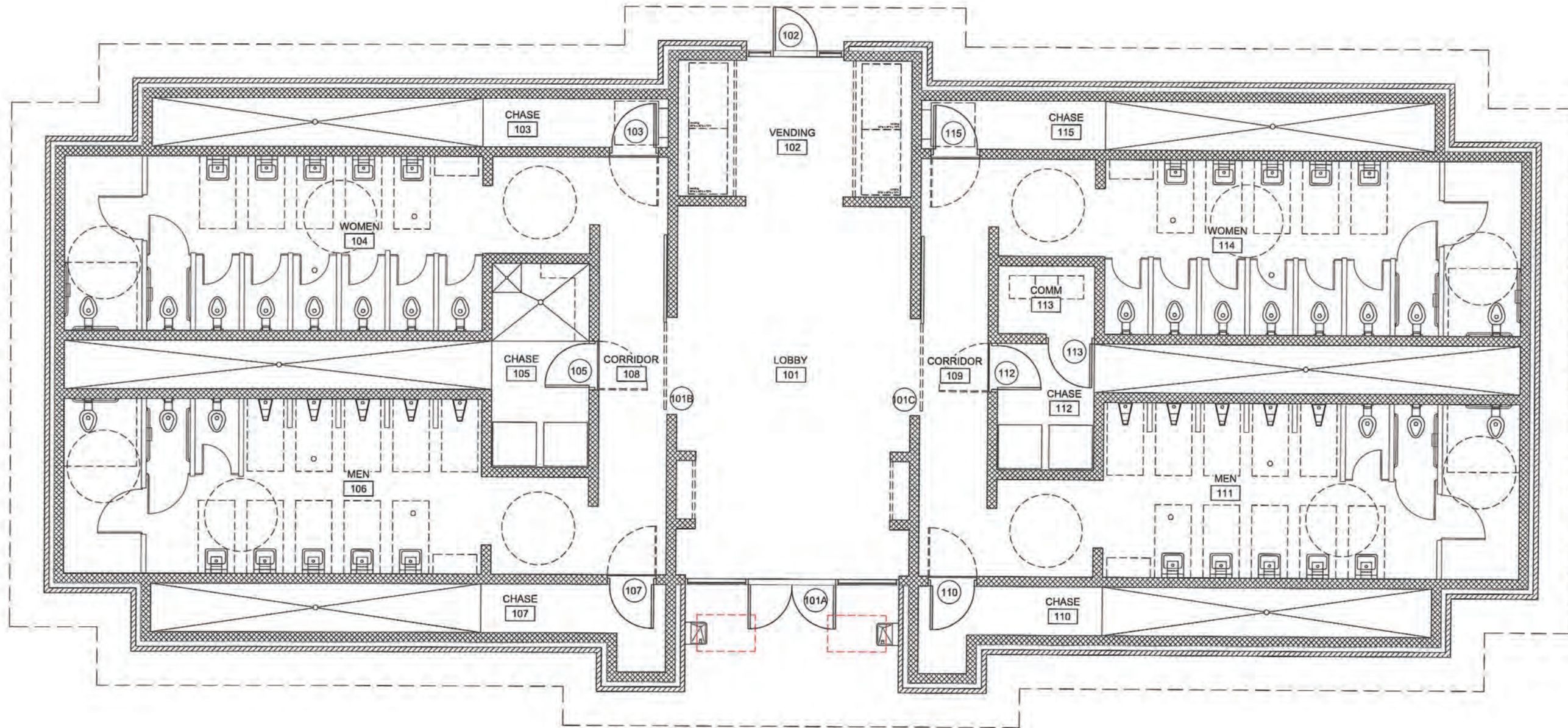


GENERAL NOTES

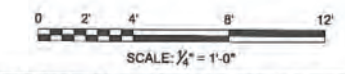
1. GENERAL NOTES

KEYED NOTES

1 KEYED NOTES



PROJECT NORTH
 1
 A-101
FLOOR PLAN
 SCALE: 1/4" = 1'-0"



Symbol	Description	Date	Appr.

Submitted by: John T. Ramey, PE Director, Federal Services	Contract Date:
Drawn by: J. DEMARNE	Solicitation Number:
Checked by: G. ARCHER	Task Order Number:
File Name: A-101.DWG	Job Piece Number:

ARKANSAS HIGHWAY AND TRANSPORTATION DEPARTMENT
 ARKANSAS TOURIST INFORMATION CENTER
 BIG PINEY
 ARCHITECTURAL
 RESTROOM BUILDING FLOOR
 PLAN

Sheet Reference Number:
A-101
 Sheet --- of ##